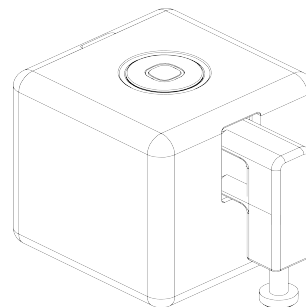
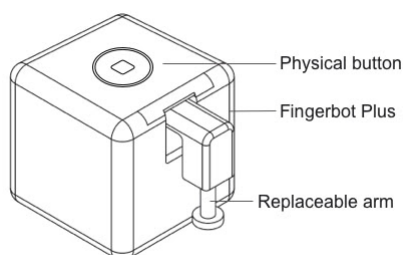


# Fingerbot Plus EN Zigbee ZX RSH

User Manual



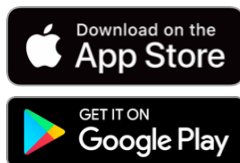
## Overview



The Fingerbot (Zigbee) is the world's smallest robot capable of intelligently controlling different buttons and switches. You can use it to click and control your existing home appliances. With the Fingerbot, you can schedule to turn on your coffee maker, activate your vacuum cleaner through voice commands, remotely turn on your office PC, and more. These tasks have now become effortless with the Fingerbot.

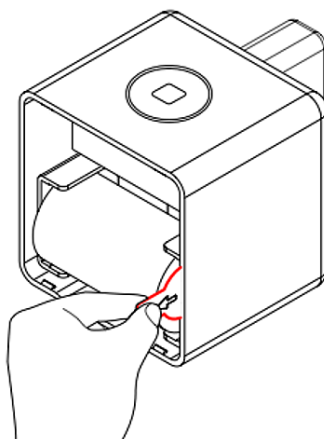
## App Installation

Smart Life App is the mobile platform for controlling IoT devices. To install the app, you can search "Smart Life" in the mobile application store.



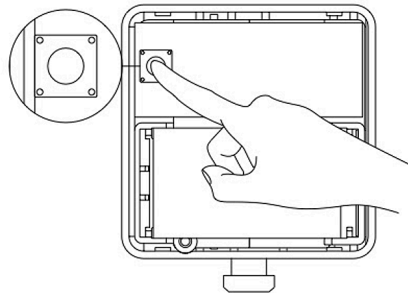
## Device Power

Please open the back cover of the product before use, and remove the battery insulation sheet to power the device.



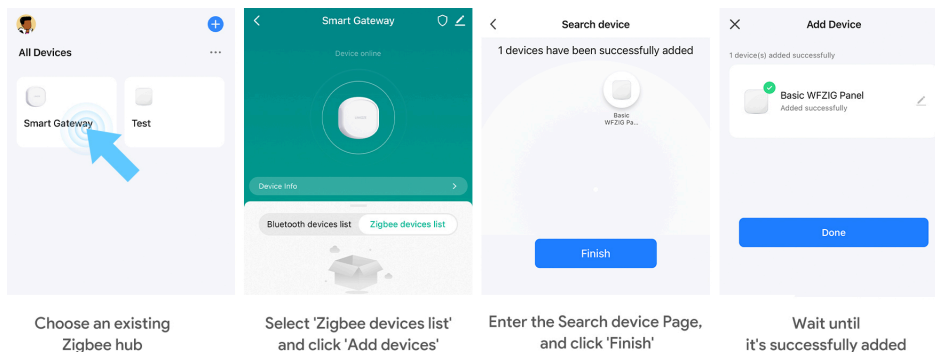
## Device Resetting

A device reset is required when pairing your Fingerbot with the app account. Please press and hold the reset button for 5 seconds until the blue light starts flashing. At this point, the device will be in pairing mode.



## Device Pairing

Open the App and click the '+' button in the top right corner. Click the 'add device' button and ensure you use a 2.4GHz network. Follow the instructions on the page to complete the device pairing.



Choose an existing Zigbee hub

Select 'Zigbee devices list' and click 'Add devices'

Enter the Search device Page, and click 'Finish'

Wait until it's successfully added

## Device Control

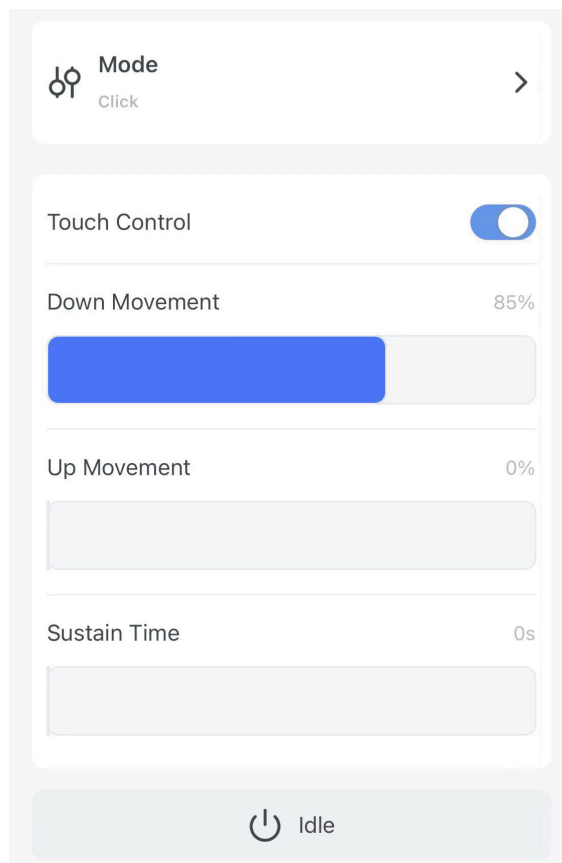
### Device Triggering

Click the Fingerbot action button in the device panel, and the action will trigger within 2 seconds when the signal is in good reception.

### Parameter Adjustment

Before using the device, please enter the device control panel to adjust the parameters of the device arm, such as mode selection, up/down movement, holding time, etc.

**Note:** The improper setting of the operating parameters may cause the product to work abnormally and reduce its lifespan, among other issues. We recommend waiting at least 10 seconds after each device click to ensure optimal performance.

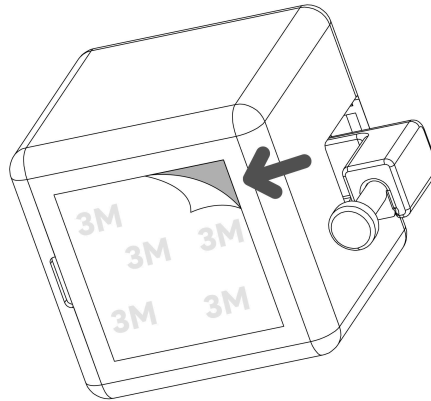


## Device Setup

### To install your Fingerbot:

1. Clean the surface of the button panel where the Fingerbot will be installed.
2. Use the double-sided tape provided in the Fingerbot packaging to attach the Fingerbot to the panel.

3. Connect your Fingerbot to the app and calibrate the movement of the Fingerbot arm to fit the button. The "Downward Movement" parameter should be set to a value where the Fingerbot arm can press the button. **Note: Incorrect movement settings may increase resistance and shorten Fingerbot's lifespan.**
4. After installation, we recommend letting the device settle for **24** hours for maximum adhesion.

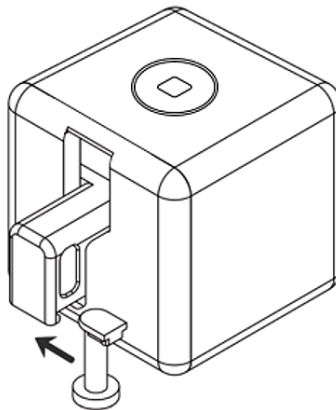


## Battery replacement

The Fingerbot uses a replaceable CR2 3.0V battery. If its arm does not move as expected, please replace the battery. To replace an old battery, open the case from the back, making sure the new battery is installed correctly.

## Replaceable Arm

The Fingerbot has a modular design, with its arm being replaceable to meet different needs in different situations. Three types of Fingerbot arms are designed and included in the Fingerbot Toolpack (sold separately).



## Warning

This product is not waterproof. Please do not install it on underwater equipment. The product contains a battery and should not be used in humid or high-temperature environments. Do not obstruct the movement of the Fingerbot's arm during operation. Doing so may cause the arm to detach and damage the motors inside the robot.

## Specifications

Dimensions: 34.5x34.5x34.5mm

Weight: 38g

Pushing force: 10N

Maximum movement: 12 mm

Wireless protocol: Zigbee 3.0

Battery type: CR2 3.0V

Working temperature: -10°C ~ 45°C/ 14°F ~ 113°F